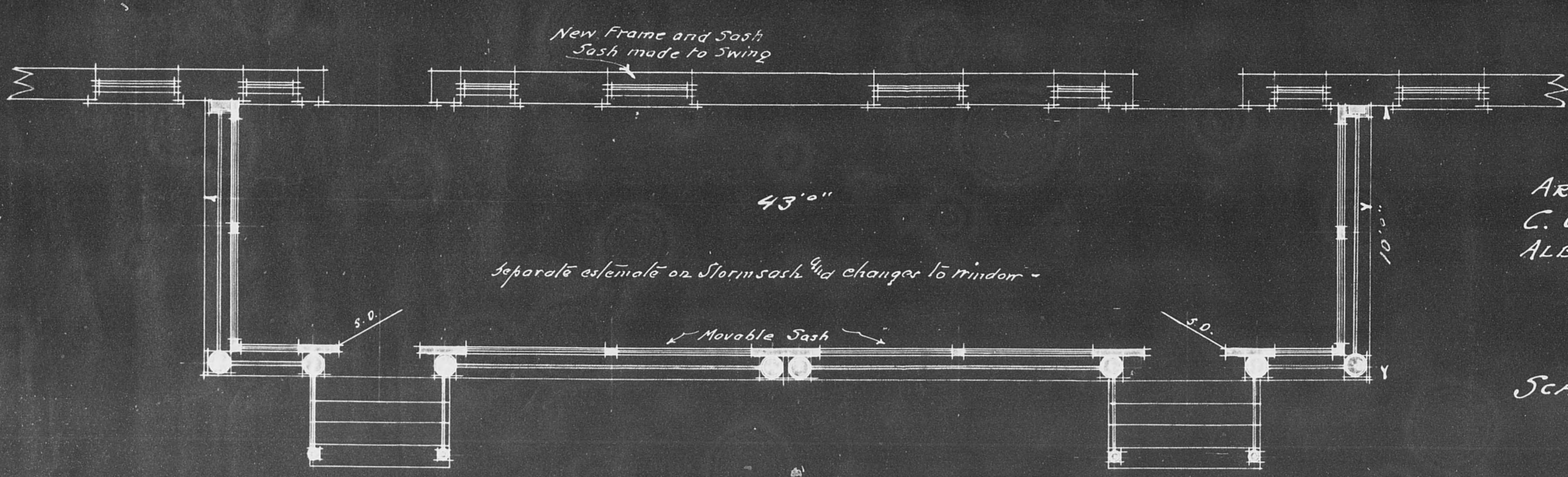


FRONT ELEVATION

SIDE ELEVATION



PLAN

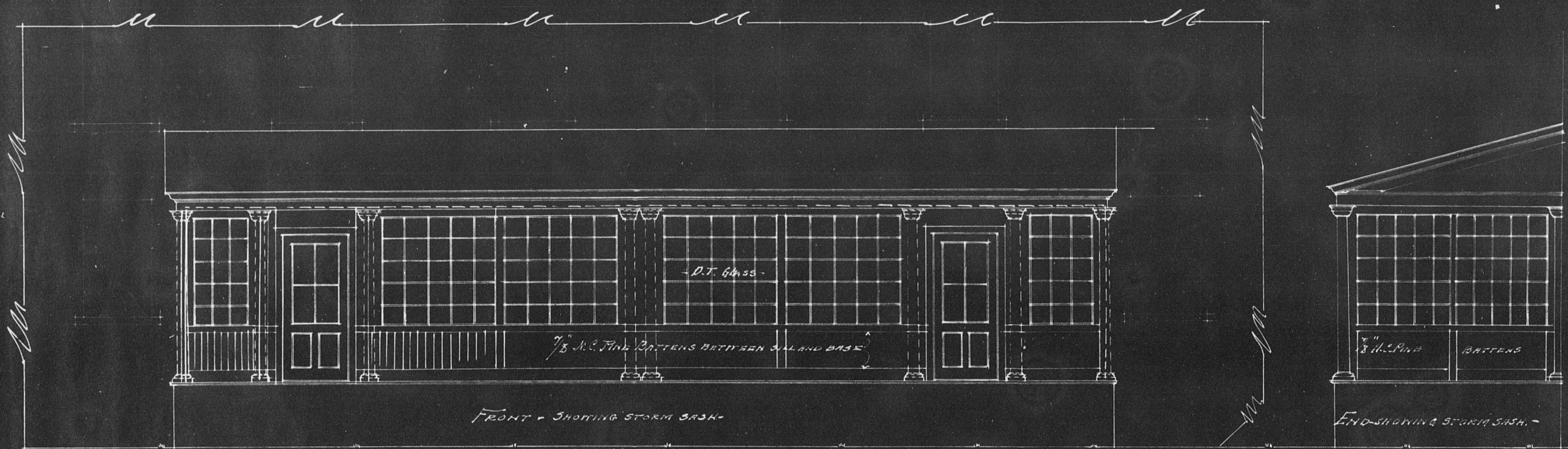
ARCHITECT
C. G. OGDEN
ALBANY, N. Y.

SCALE 1/4" = 1'0"

PROPOSED PORCH FOR THE UNITED SOCIETY OF SHAKERS
MOUNT LEBANON, COLUMBIA COUNTY, NEW YORK.

1570466

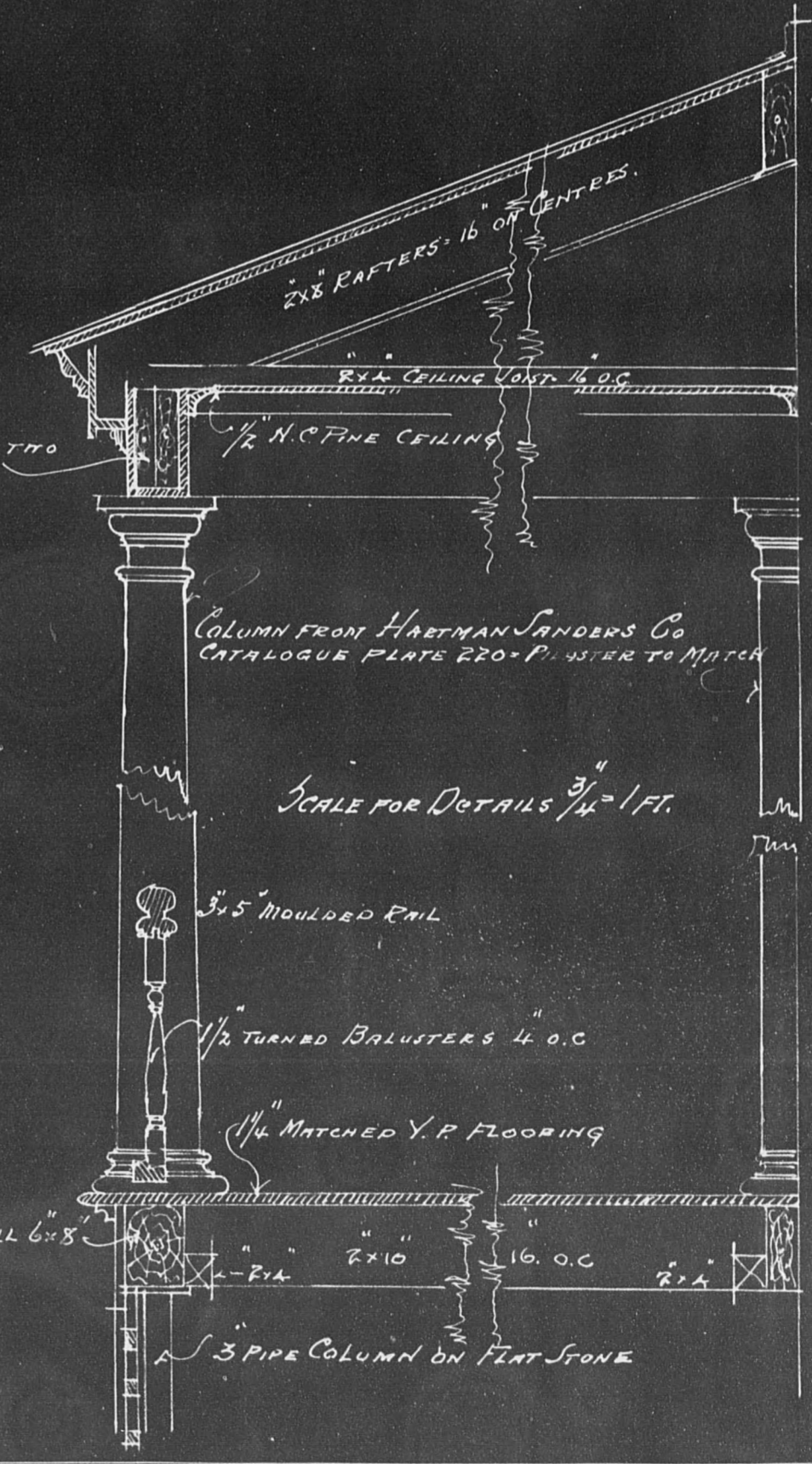
MADE BY
COMMERCIAL BLUE PRINT CO.
52 STATE ST. ALBANY, N. Y.
W. L. COUGHTRY, Jr.
PHONE MAIN 5738



SPECIFICATION -
 All timber used to be sound seasoned spruce of the sizes given and placed as detailed -
 All casing trim &c to be from white pine - Foot boards 1/2" milled - Floor 1/2" x 2 1/2" Y.P. painted in white lead -
 Sill to rest on 3" x 4" columns - Columns to set on flat stone - 6 plates on columns top and bottom -
 Columns and balusters to be the lock rail type - Paneling under floor out of 1/8" pine with 1/2" lattice -
 Steps to slopes formed of 1/2" Y.P. treads and white pine treads and stringers - Posts, Newels and turned balusters
 as shown and as may be detailed -
Storm Sashes 1/2" sash and sash doors furnished and erected as shown - these arranged as to be removable -
Roof Roof covered with Lap Weld Granite Roofing - securely nailed in position
Window Frame and sash now in window in office will be removed and new blank frame and 1/2" glazed sash in one
 light substituted - sash hung with bolts and furnished with proper fastenings -
Painting &c
 All work in connection with porch except floors and treads to steps - all work of sash and sash doors
 and new window frame and sash will have 3 coats of oil paint - floors and steps 1 coat of raw linseed oil -
to be done
 State separately the cost of sash and sash doors and change to frame and sash -
 All work to be done in the best manner and in accordance with Architect's directions

ARCHITECT
 C. G. OGDEN
 ALBANY, N. Y.

SCALE 1/4" = 1.0"



PROPOSED PORCH FOR THE UNITED SOCIETY OF SHAKERS
 MOUNT LEBANON, COLUMBIA COUNTY, NEW YORK.

BLUE PRINT
PORCH - OFFICE
15046 (978)

MADE BY
COMMERCIAL BLUE PRINT CO.
52 STATE ST. ALBANY, N. Y.
W. L. COUGHRAN, JR.
PHONE MAIN 5738

FOLDER 142-5